

MANUAL

V45 SERIES LED UPGRADE KIT

- EN LED HEAD LIGHT MANUAL
- JP LEDヘッドライト取扱説明書
- SC LED 前照灯说明书
- TW LED 前照燈說明書



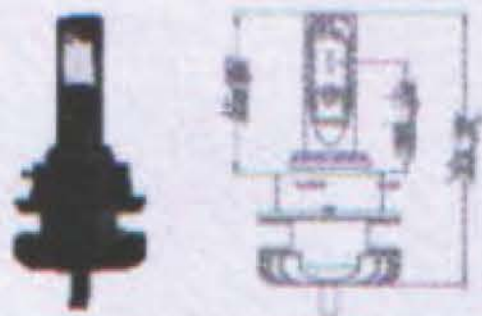
TABLE OF CONTENTS

HIGH/LOW BEAM SERIES	-----	2
PACKING LIST	-----	3
APPLICATION	-----	4
BEFORE INSTALLATION	-----	5
IMPORTANT INFORMATION	-----	6
INSTALLATION INSTRUCTIONS	-----	7
TROUBLE SHOOTING	-----	19
ABOUT WARRANTEE	-----	20

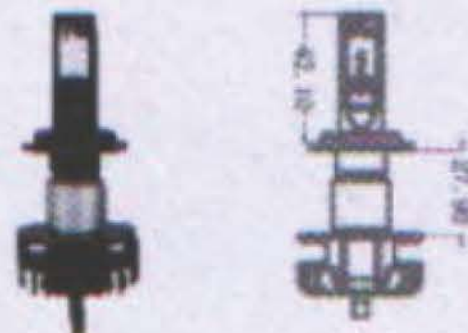


LED UPGRADE KIT

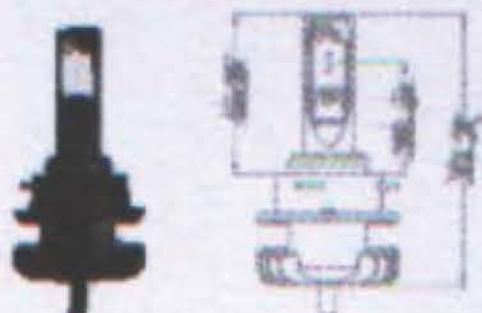
9005



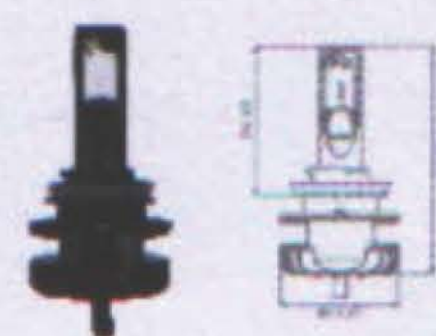
H7



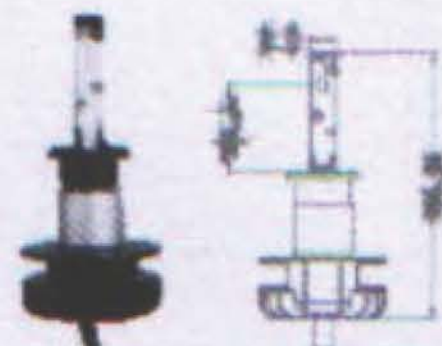
9006



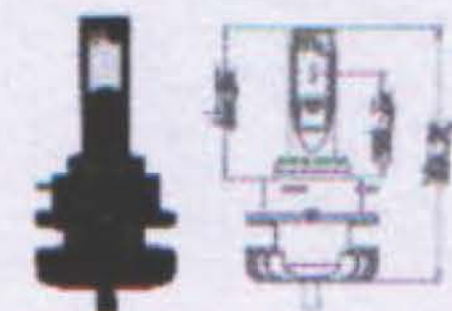
H11



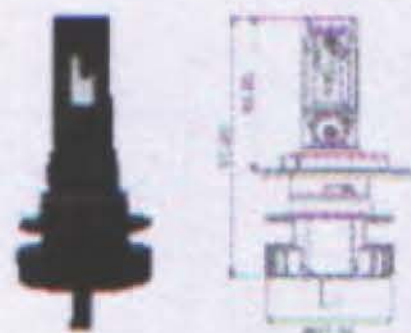
H1



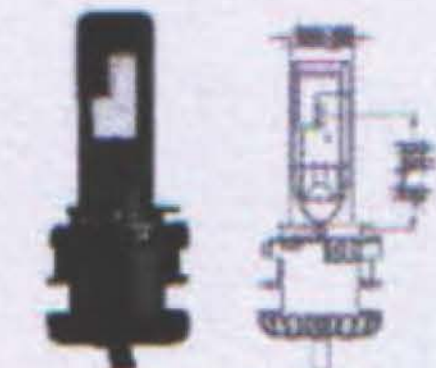
9012



H4



H15



PARAMETER

HI / LOW BEAM (H4) AND SINGLE BEAM (H1/H7/9005/9006/9012/H11)

- Input Voltage: 10-30V
- Life-Span: 30000hrs
- Color Temp.: 6000k/5700k/3000k
- LEDs Junction Temp. <75°C
- Passive cooling: Heatsink and air guide groove
- Material of Housing: Integrally formed Aluminum

LED UPGRADE KIT PACKAGE



BOX SIZE : 5cm(H)×20cm(L)×12.9cm(W)

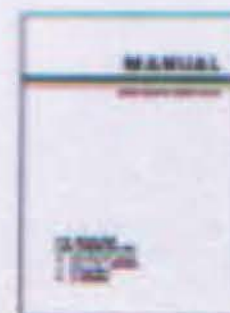
LED UPGRADE KIT PACKAGE INCLUDE



Pair of led bulbs
X2



Zip ties
X8



User manual
X1

APPLICATION AND MATCHING



Universal Models Table

1. 9005/9006=HB3/HB4

2. H1

3. H7

4. H11=H8/H9/H16

5. 9012

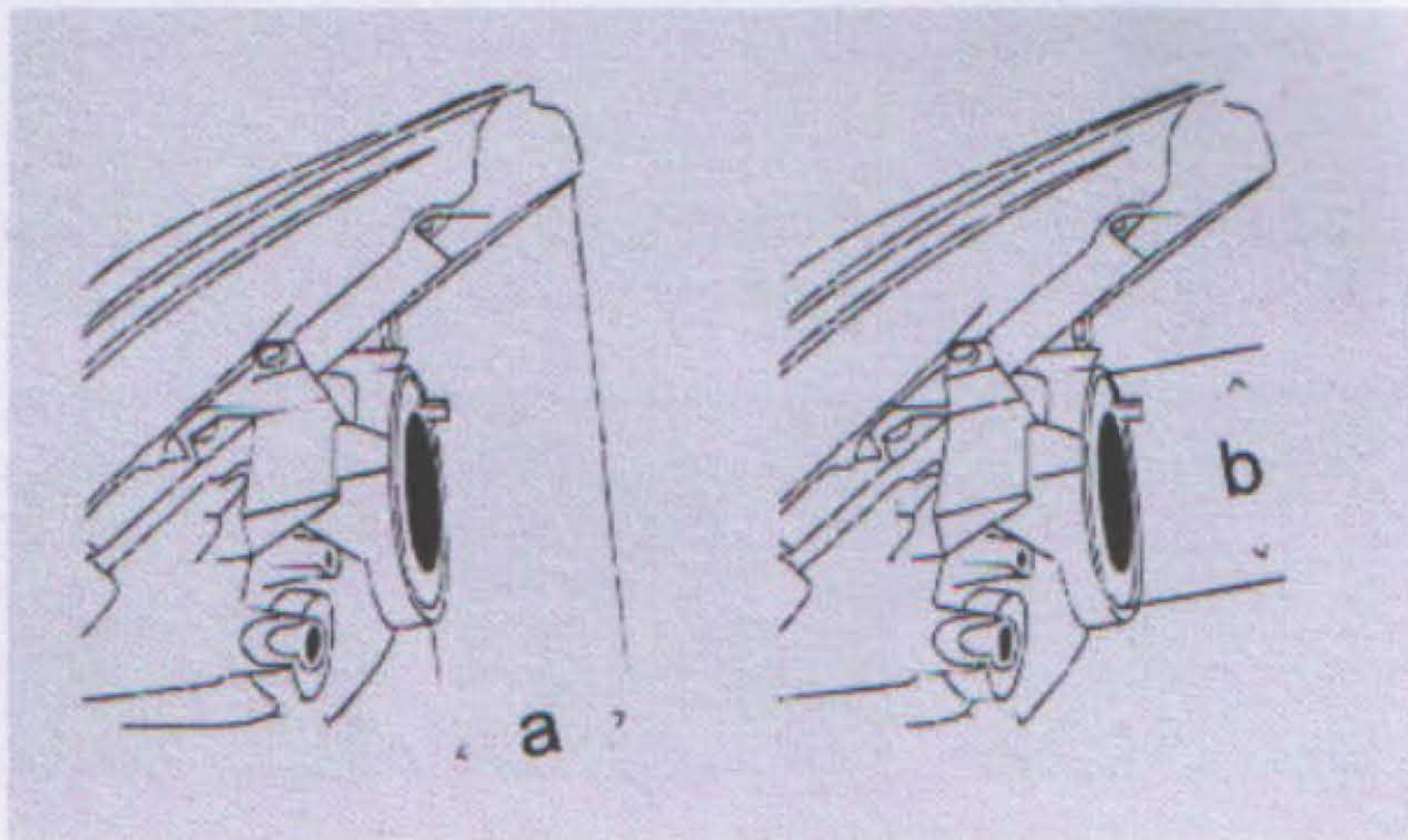
6. H4=HB2/9003

7. H15

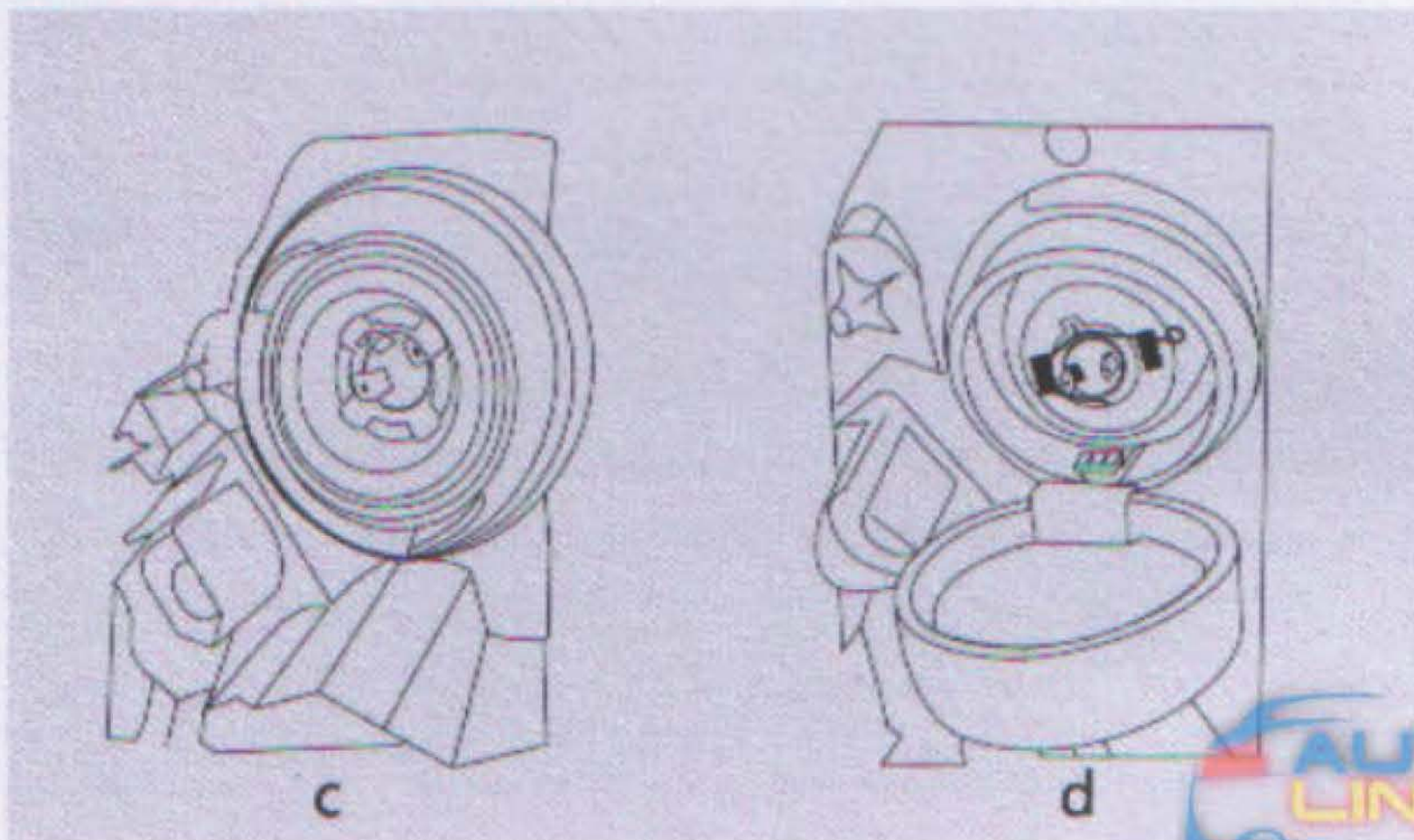
8. D1-4

1 BEFORE INSTALLATION

- Confirm whether the overall size of the LED bulb can fit in the lamp housing , a: The space for LED bulb installed outside the dust cover required; b: The space for LED bulb mounted inside the plastic lamp housing required.



- Confirm how the original bulb installed, c: the original bulb installed outside the dust cover d: The original bulb installed inside the plastic lamp housing by a metal pin.



2 IMPORTANT INFORMATION

Please read the installation guide before installed LED bulb.

⚠ Attention

- Before you installed, please check there's no dust or damage on the led light. (ESPECIALLY ON THE LED BULB). IF YES PLEASE DO NOT INSTALLED ON YOUR VEHICLE.
- The driver are waterproof and heat-resistant. But please donot fix the driver on hot parts of the engine.
- Please confirm the modle of bulb before installation.
- Please disconnect you battery before you uninstall the orignal bulb and install LED bulb.

⚠ Warning

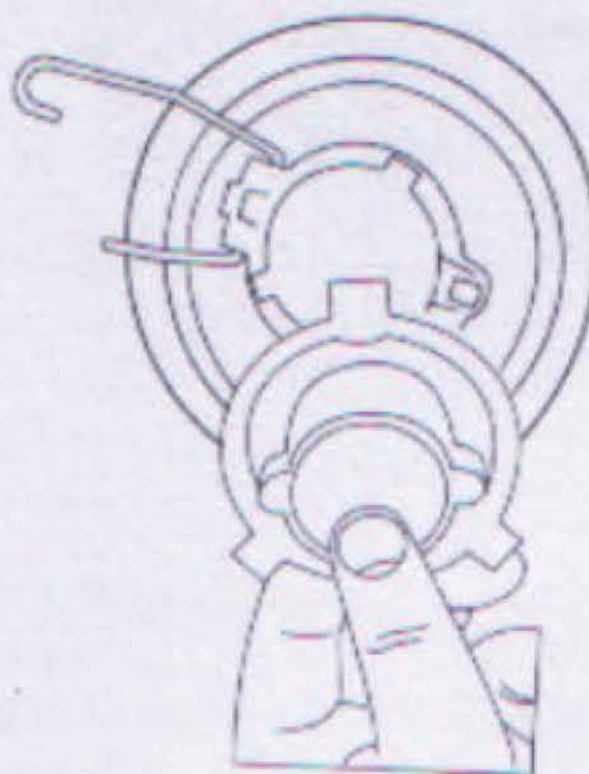
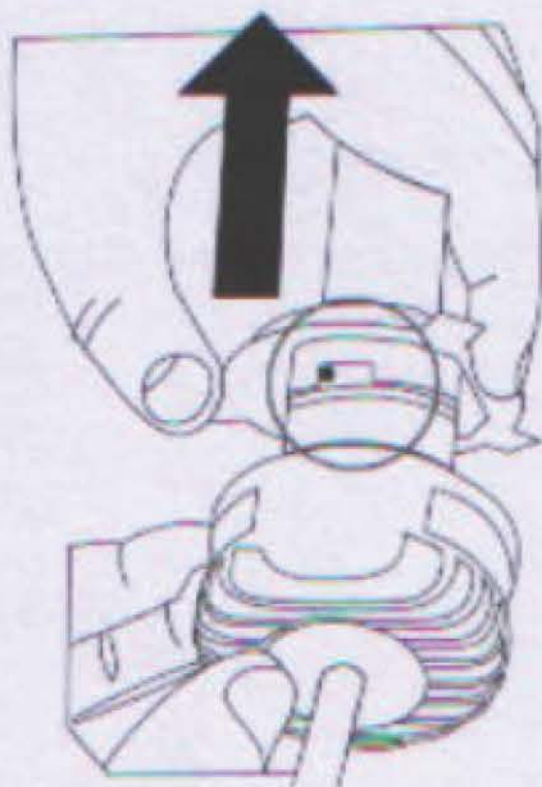
- Please make sure that led chips are clean before you installed.
- Please do not stared at the led light when it lights on.
- Pease do not touch the led chips when it lights on.

⚠ Other

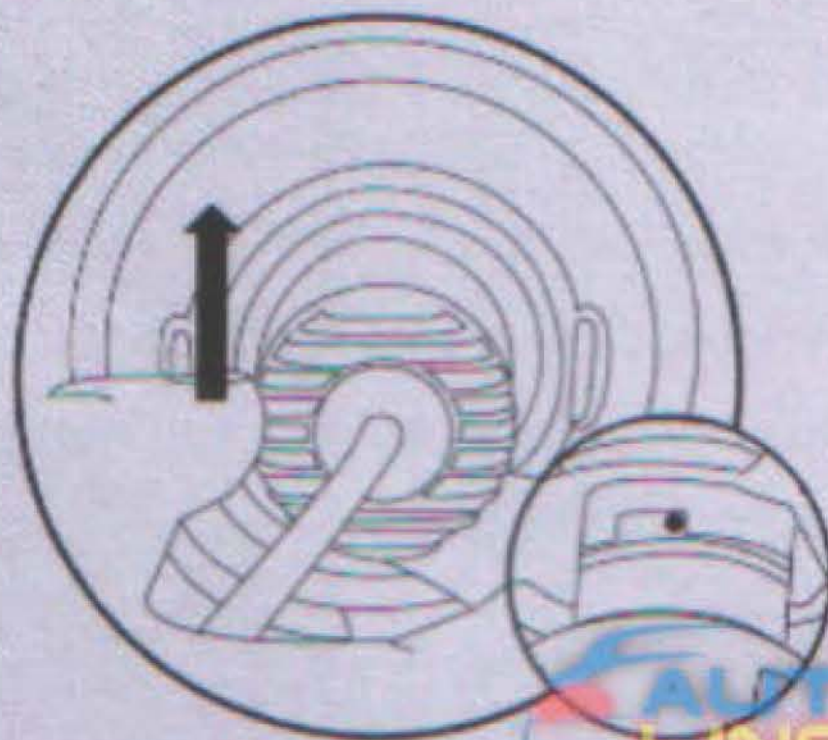
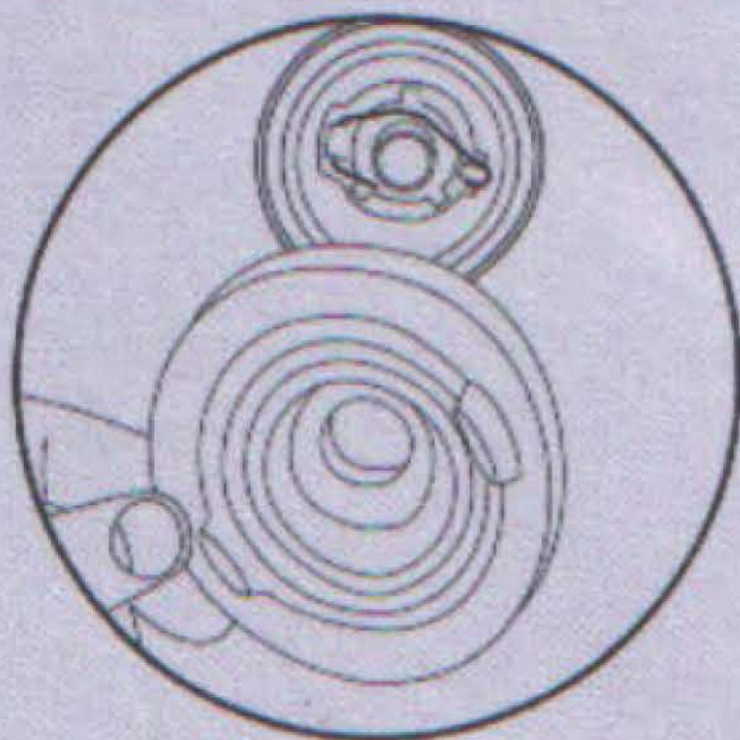
- Please check to see if the led light work normal and there's no warning sign on your dashboard after you installed.
- Please make sure that you installed the dust cover correctly.
- Please do not put your drivers on anything that is heat on easy
- Please make sure that all the wires will not interference other wires
- Please do not over bend the wires.

1 OUTSIDE HEAT SINK INSTALLATION

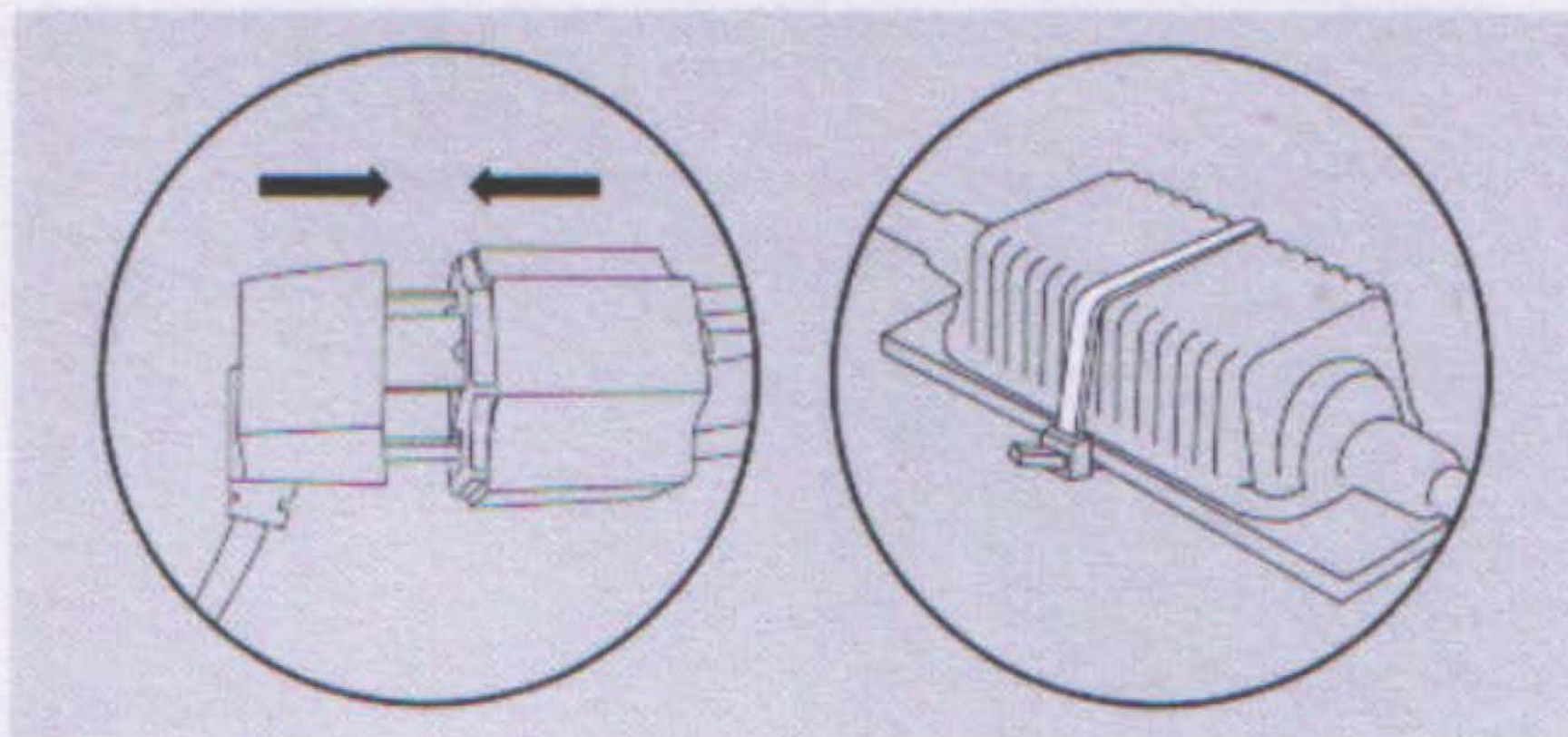
- Twist the LED base in anti-clockwise and separate it and the adapter. Take off the original bulbs and fix our H4 adapter into the headlight housing.



- Lid the dust cover, Make sure the point on the lamp and the right side of the adapter notch in the same way, insert the lamp into the adapter, it will be locked. Plug the original connector and adhere the driver.

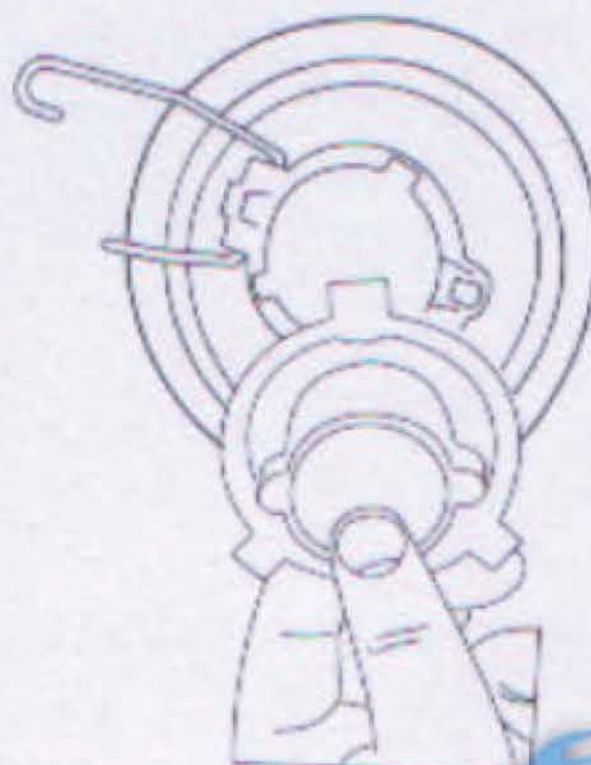
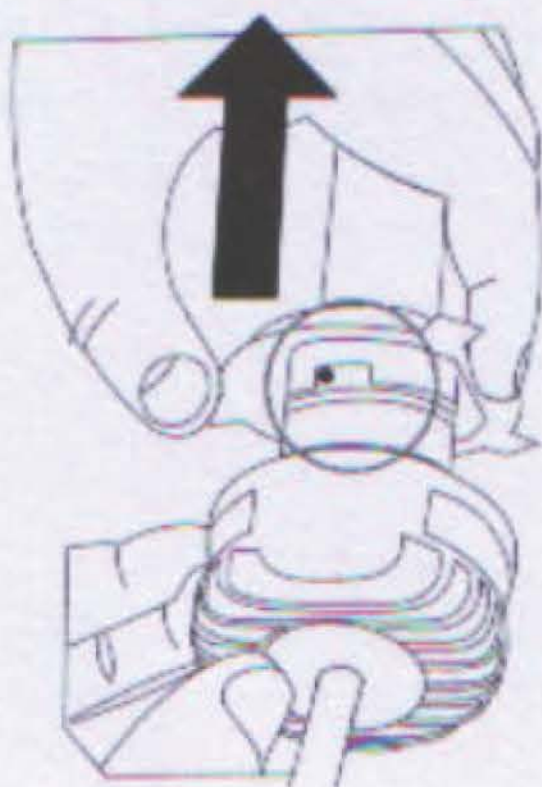


- Please connect to the original plug, zip tie or use the double side adhesive to set the drivers

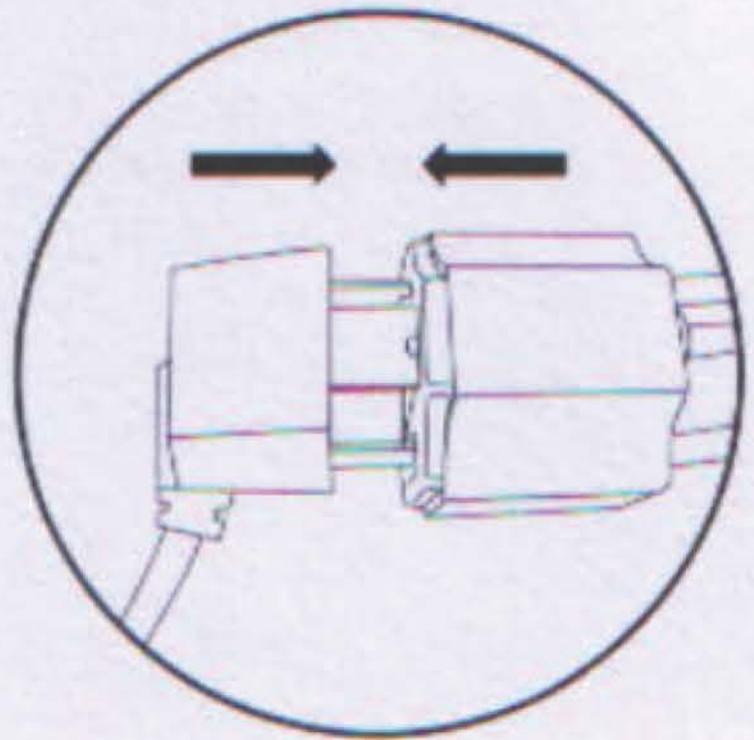
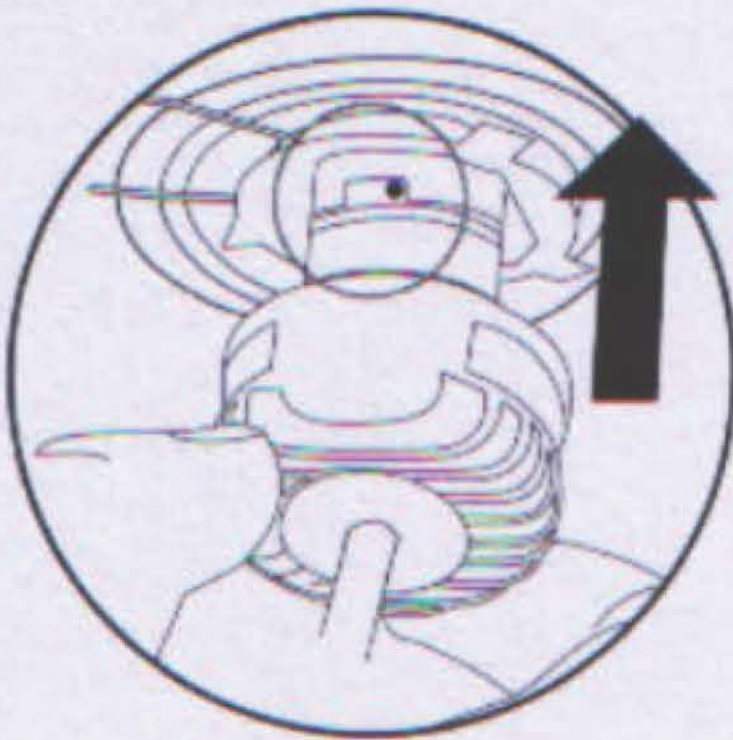


2 WHERE THE ORIGINAL BULB INSTALLED INSIDE THE LAMP HOUSING

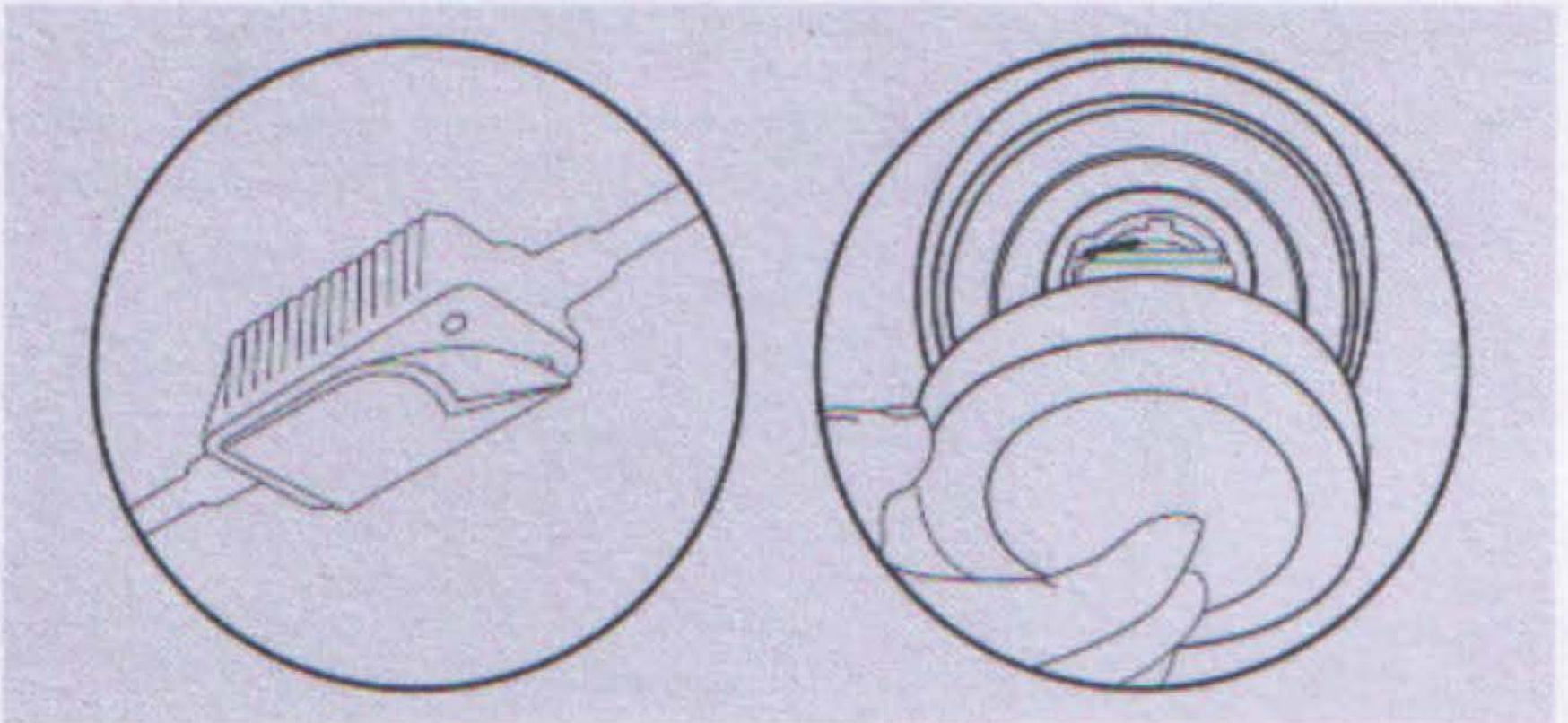
- Twist the LED base in anti-clockwise and separate it and the adapter. Take off the original bulbs and fix our H4 adapter into the headlight housing.



- Make sure the point on the lamp and the right side of the adapter notch in the same way, insert the lamp into the adapter, it will be locked. Plug the original connector and adhere the driver.



- Use the double side adhesive to set the drivers, Lid the dust cover,



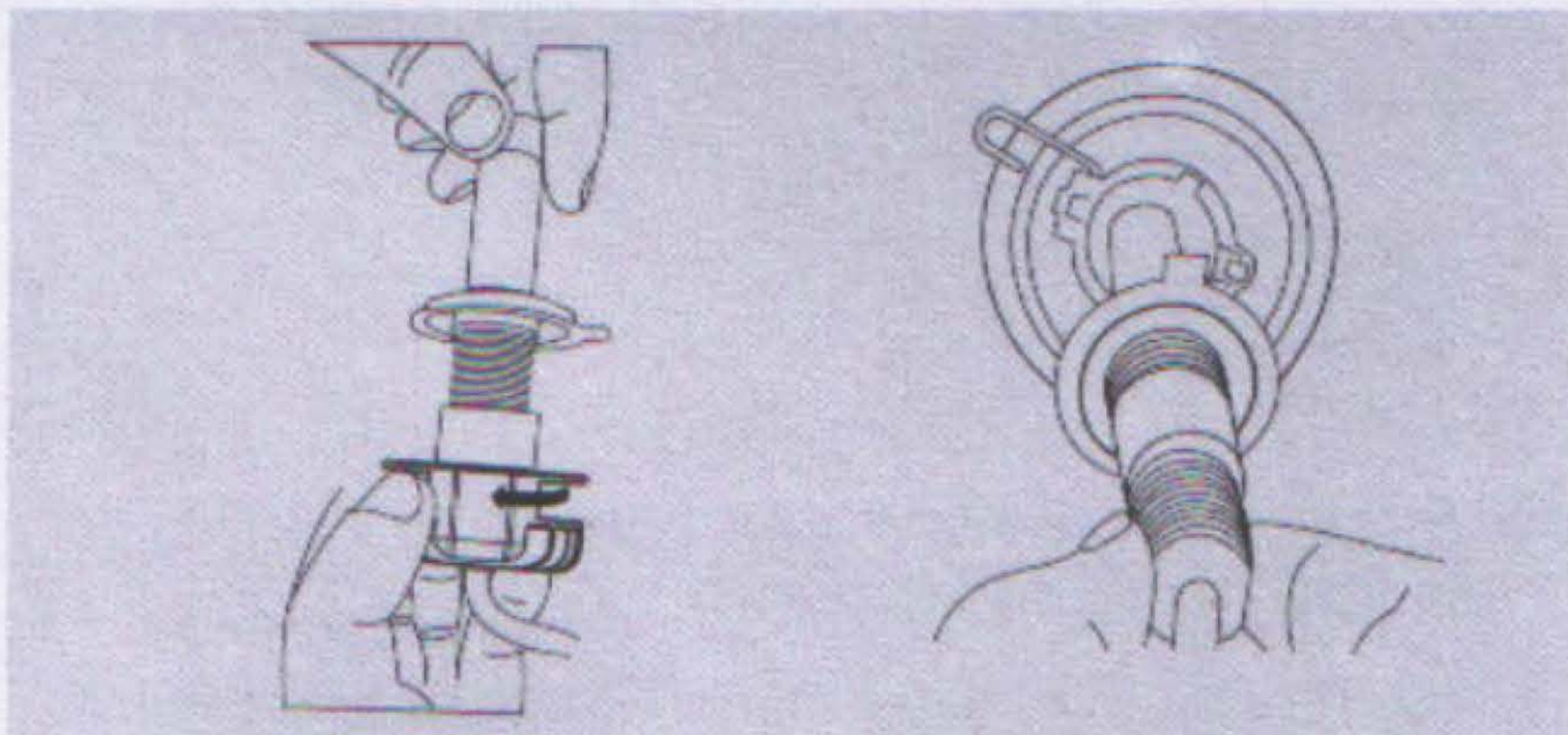
Please take the above steps for installation just for reference.

INSTALLATION INSTRUCTIONS

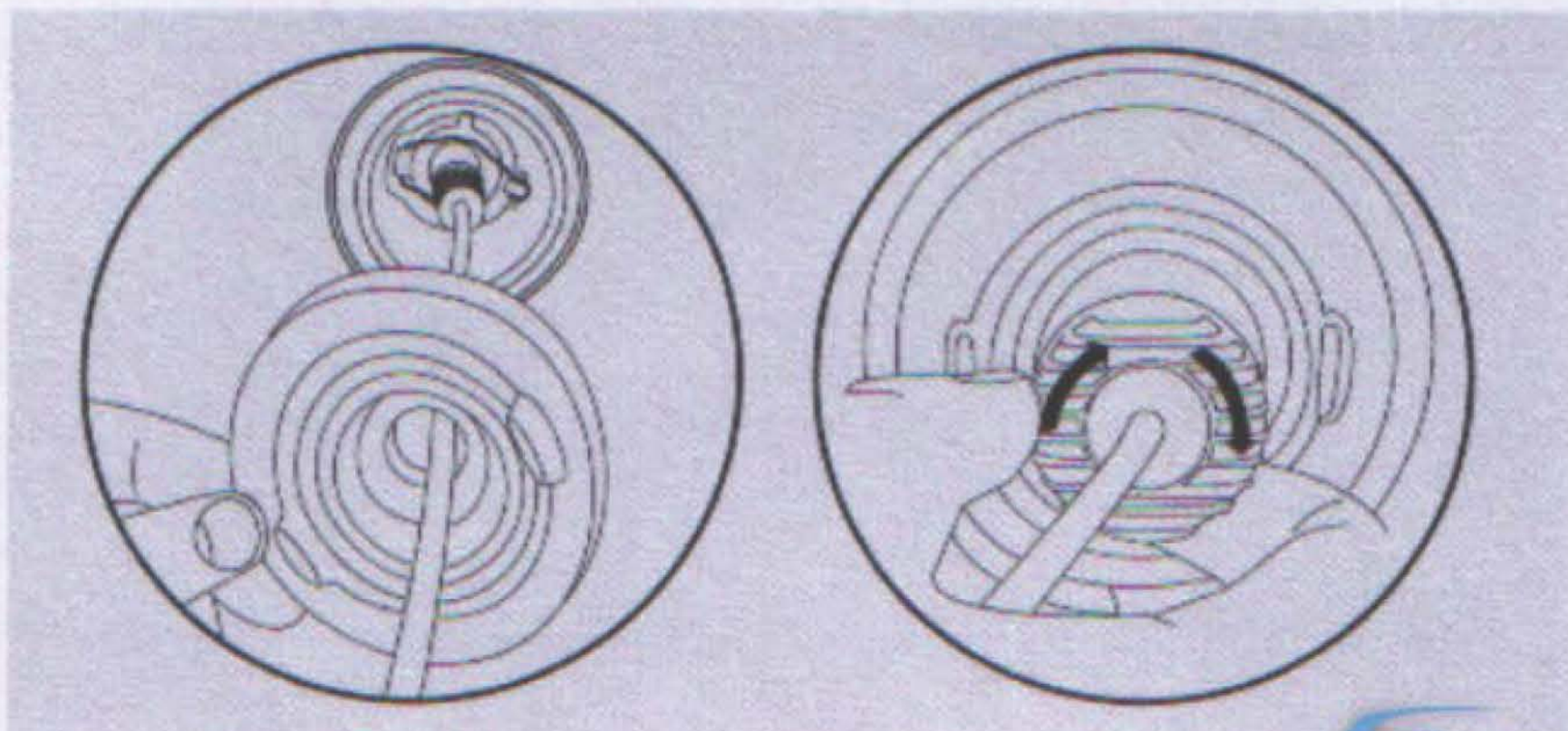
H7/H1/D1-4

1 WHERE THE HEATSINK SHOULD BE PUT OUTSIDE THE DUSTCOVER

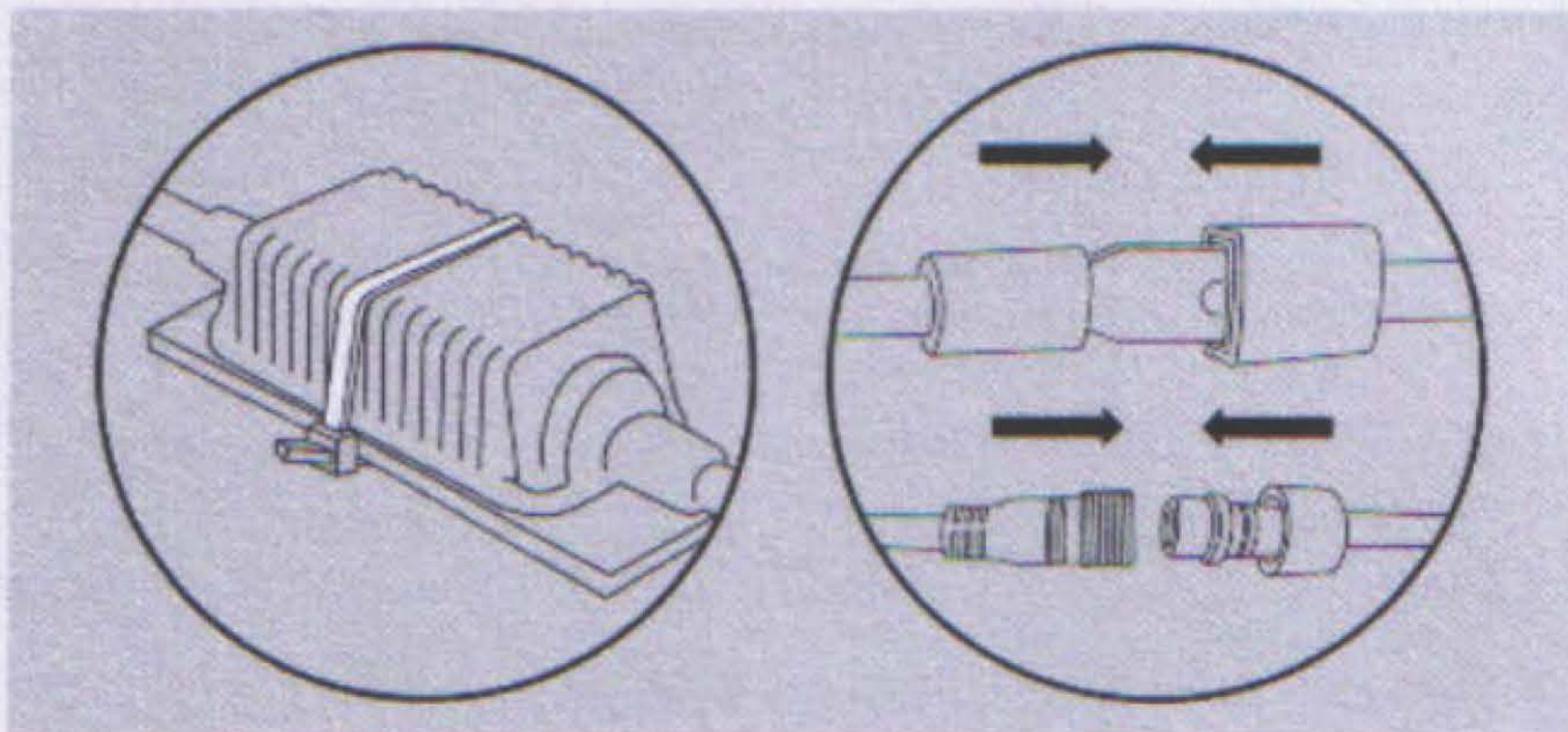
- Take out the heatsink of H7 LED bulb, then take out the original bulb of the car, use the same way of installation the original bulb to install the H7 LED bulb (may fix by circlip)



- Threading out the cable from the original dustcover, lid the dustcover and twist the heatsink of LED H7 tight enough to the LED bulb.

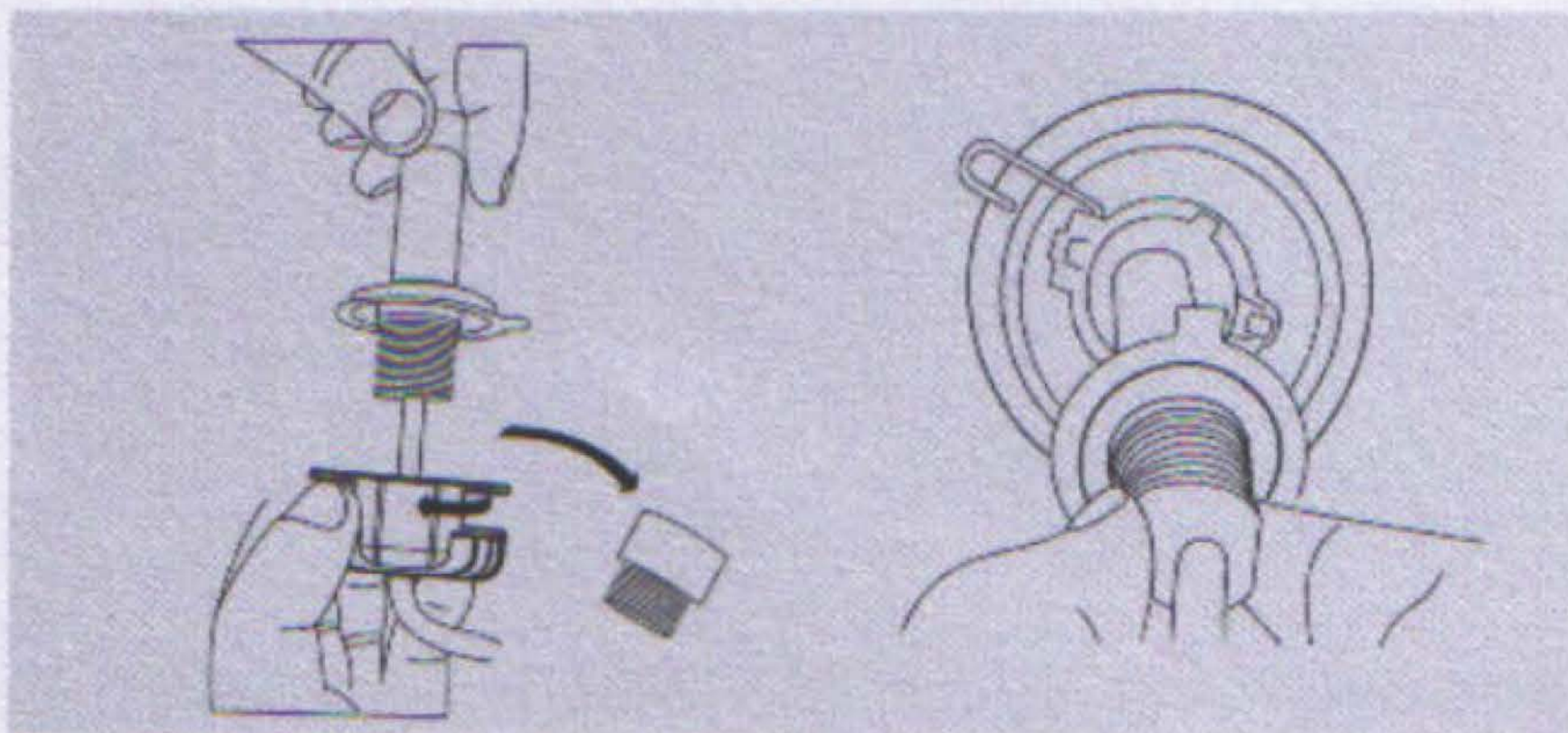


- Plug in all the connectors, fix the driver on car.

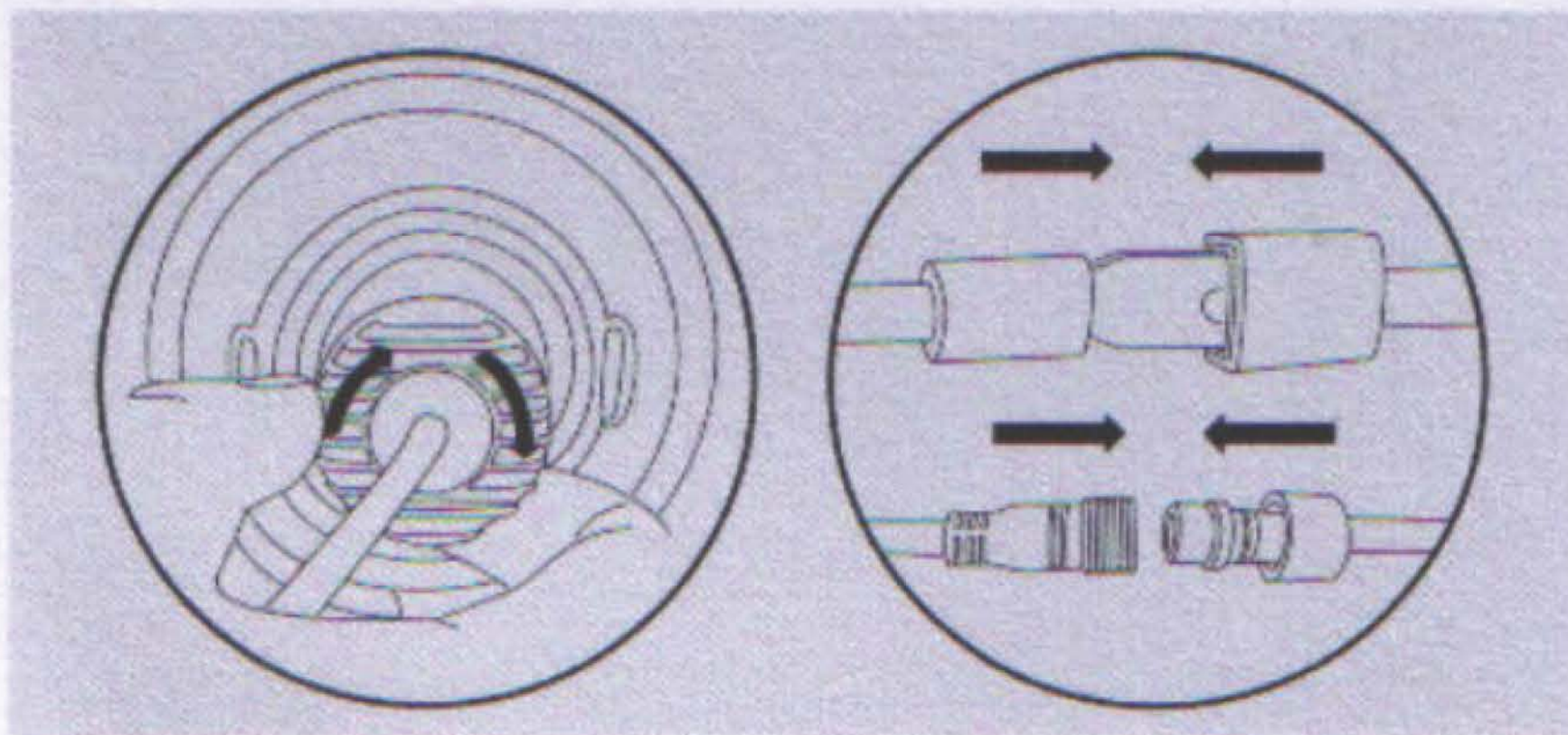


2 WHERE THE LED HEATSINK SHOULD BE INSTALLED INSIDE THE LAMP HOUSING

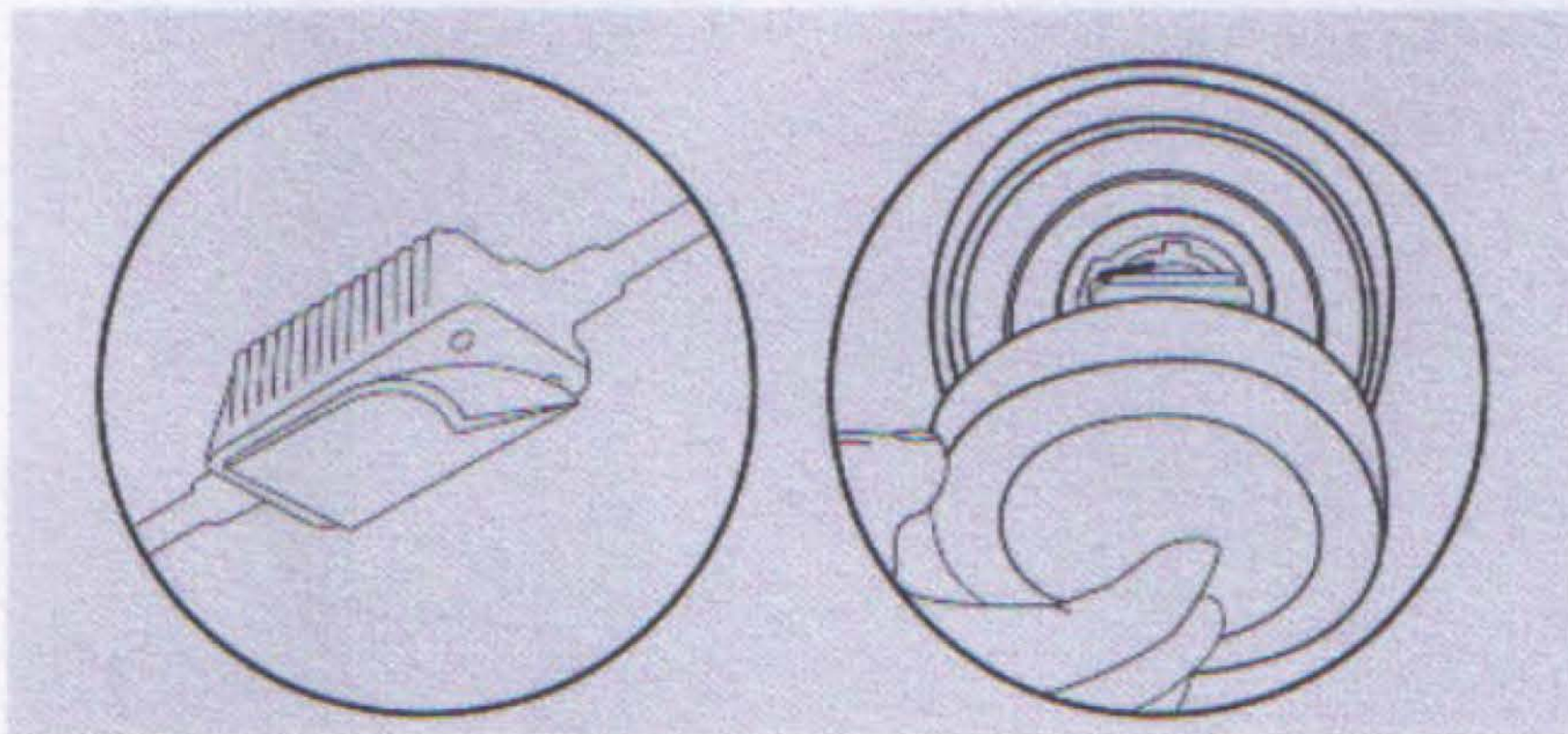
- Take out the heatsink of H7 LED bulb, then take out the original bulb of the car, use the same way of installation the original bulb to install the H7 LED bulb (may fix by circlip)



- Twist the heatsink (no need the exten then pole) clockwise to tight, plug in the original H7 plug. Make sue the cathode and anode connected in right way.



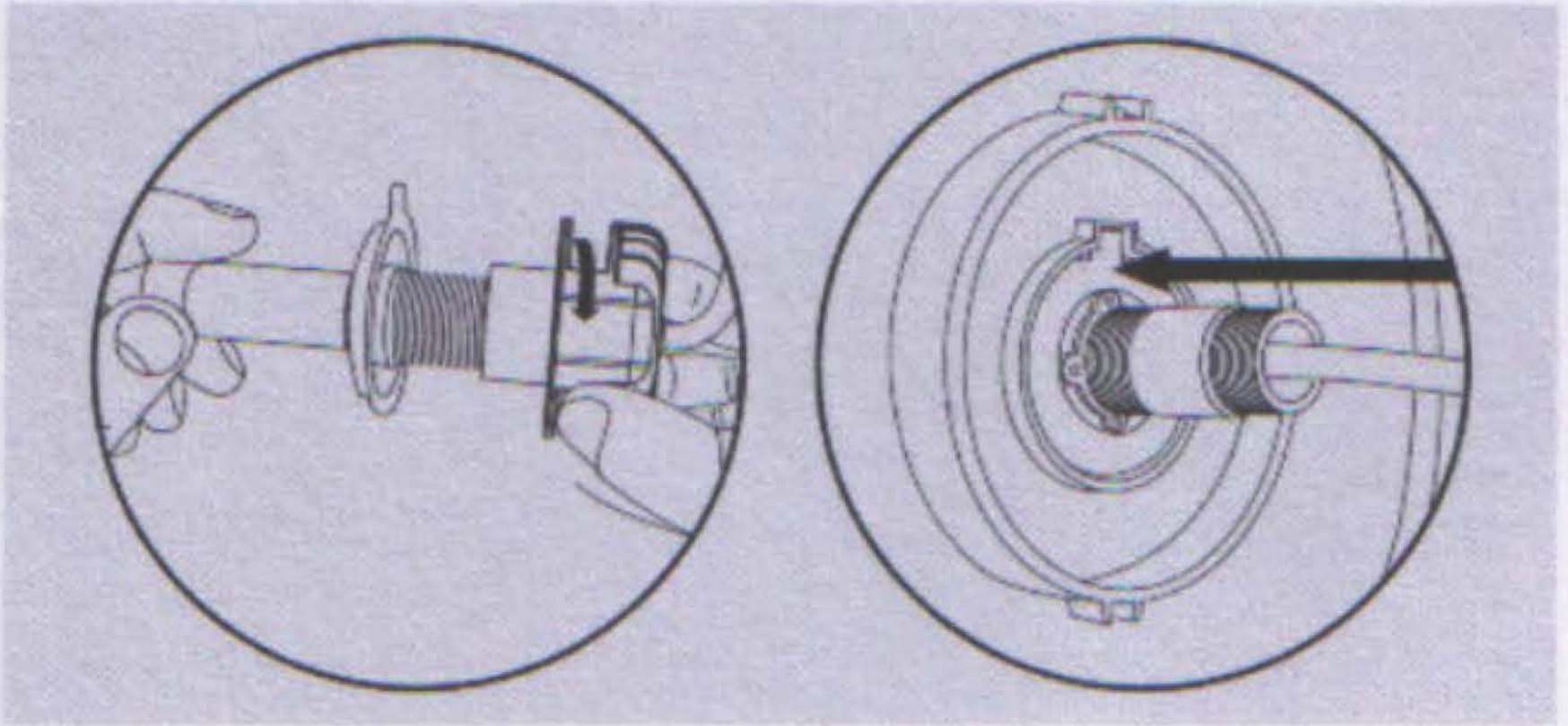
- Put the whole driver into the lamp housing, use the double side adhesive to fix the driving inside the lamp housing, lid the dustcover.



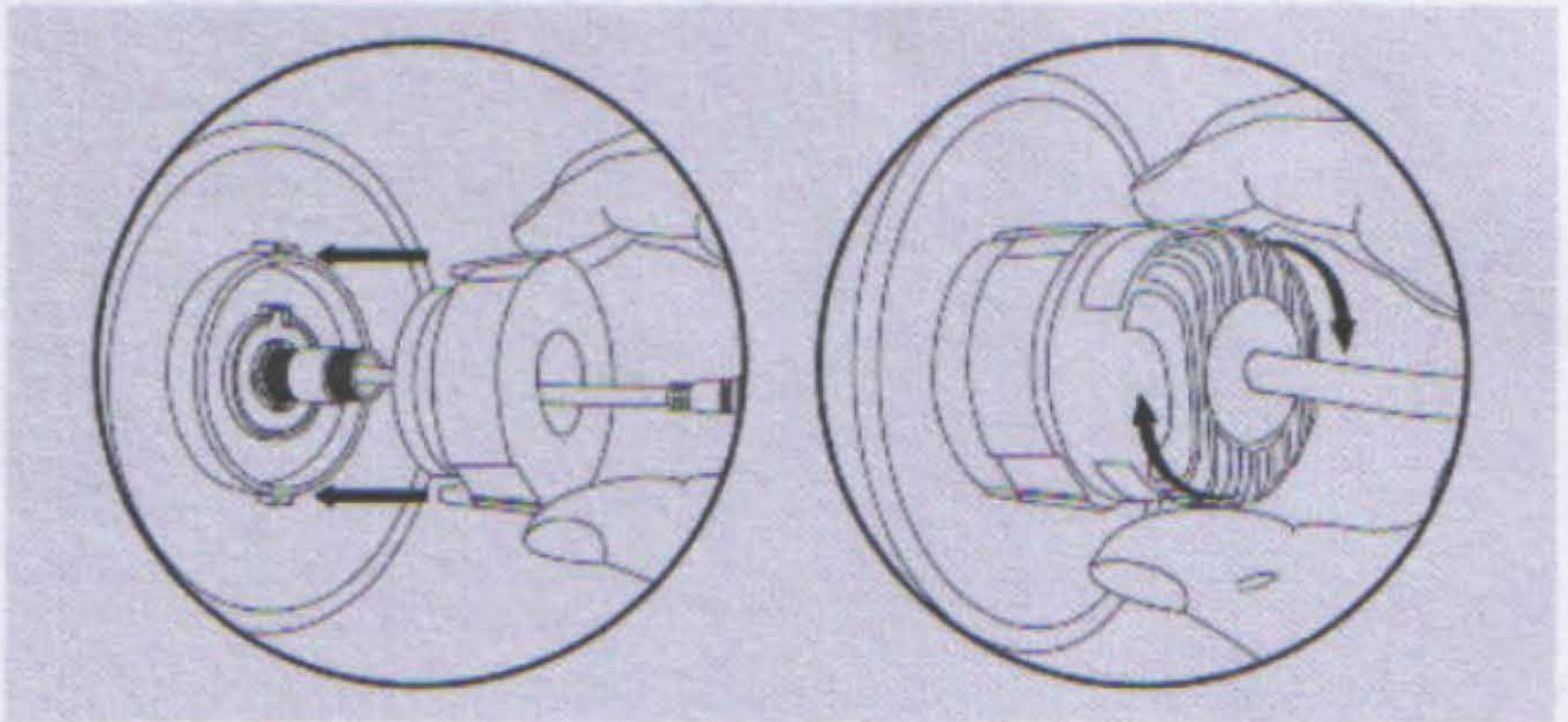
The above steps is just for reference when install this LED bulb.

3 SPECIAL BULB ADAPTOR INSTALLATION (TYPE A)

- Take out the heatsink of H7, fix the H7 LED bulb to the adaptor in right way.

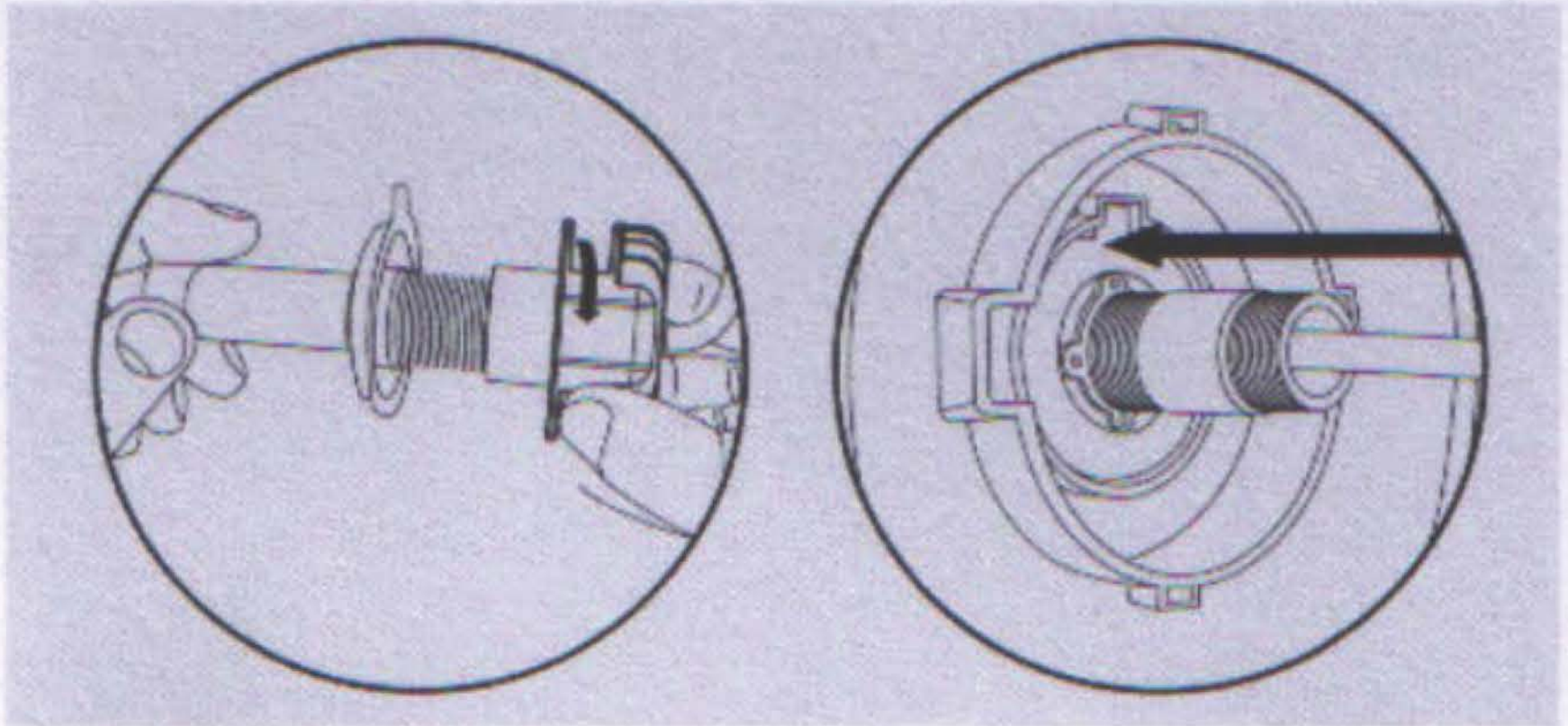


- Threading out the cable from adaptor, twist in the adaptor to the lamp housing (may be on the lamp reflector or somewhere on the lamp housing), twist in the heatsink (sometimes need the extension pole), make sure the heatsink and LED bulb get enough touch and the heatsink is tightly installed.

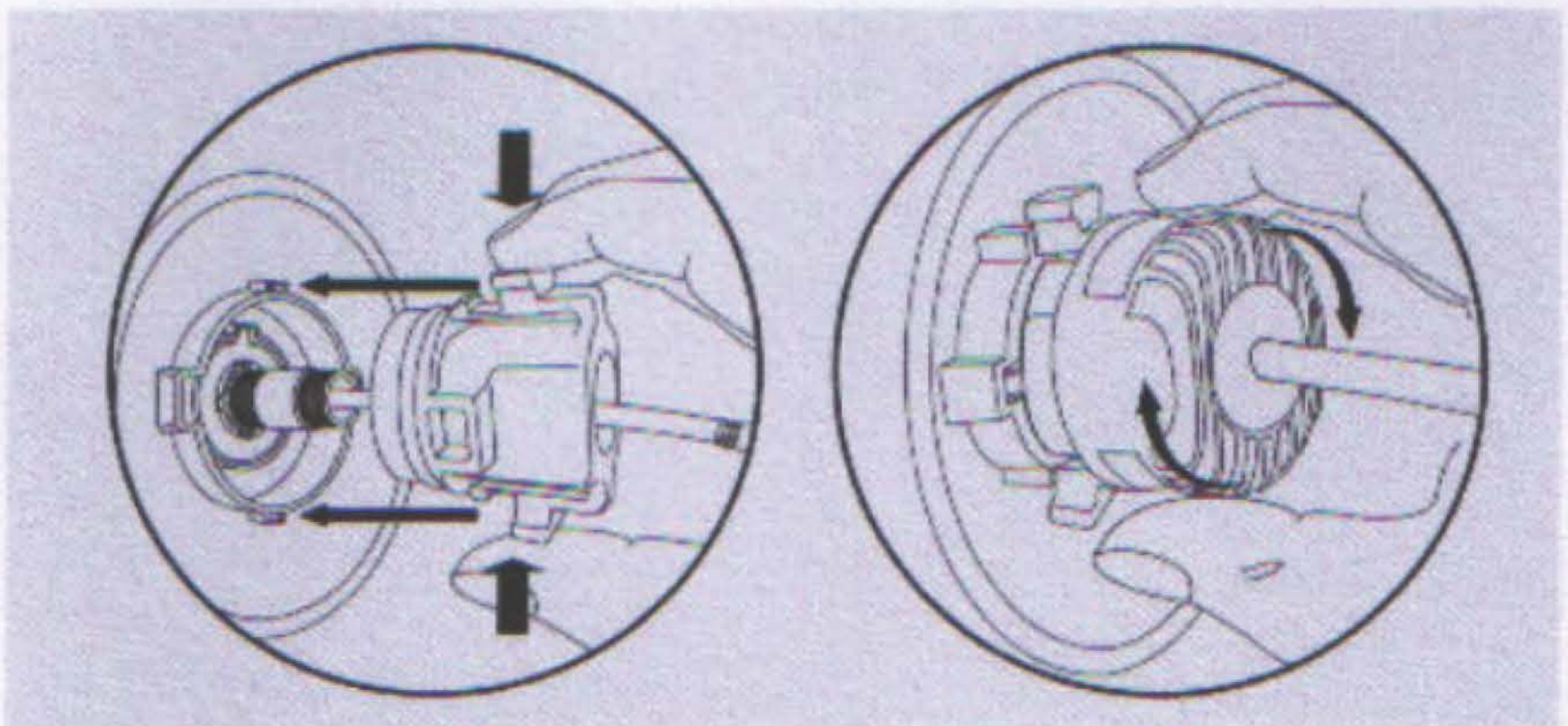


4 SPECIAL BULB ADAPTOR INSTALLATION (TYPE B)

- Take out the heatsink of H7, fix the H7 LED bulb to the adaptor in right way.

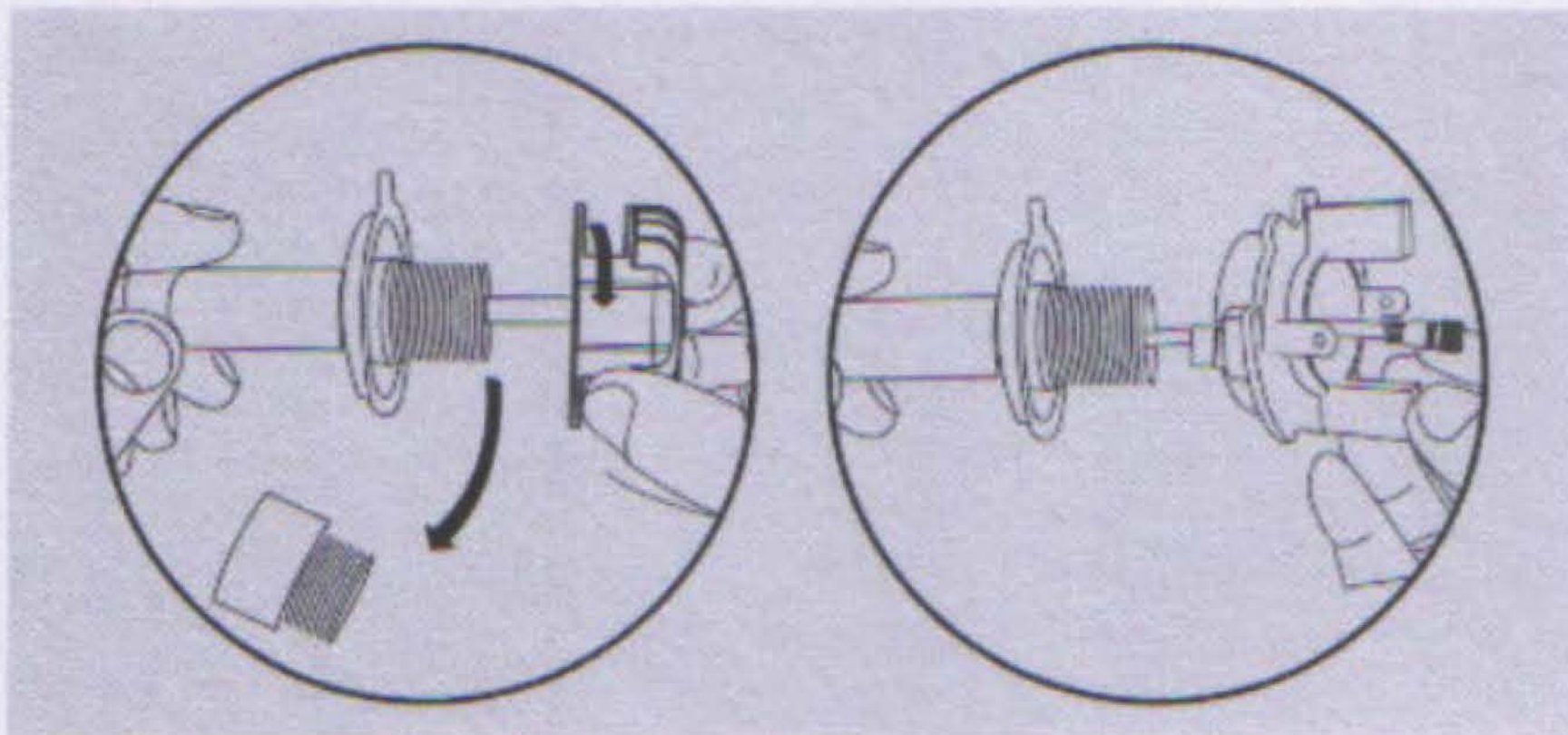


- Threading out the cable from adaptor, twist in the adaptor to the lamp housing (may be on the lamp reflector or somewhere on the lamp housing), twist in the heatsink (sometime need the exten then pole), make sure the heatsink and LED bulb get enough touch and the heatsink is tightly installed.

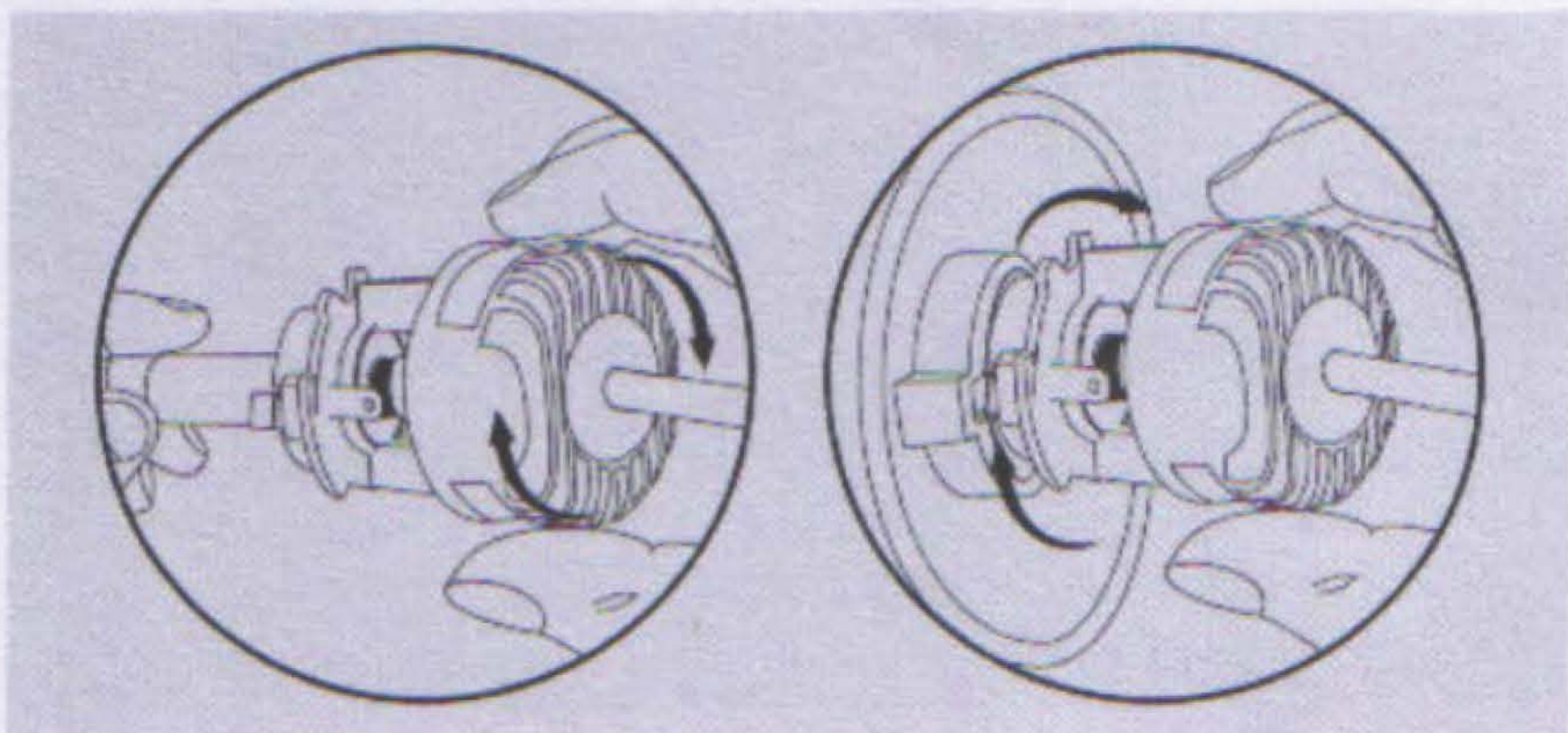


5 SPECIAL BULB ADAPTOR INSTALLATION (TYPE C)

- Take out the heatsink of H7, fix the H7 LED bulb to the adaptor in right way.



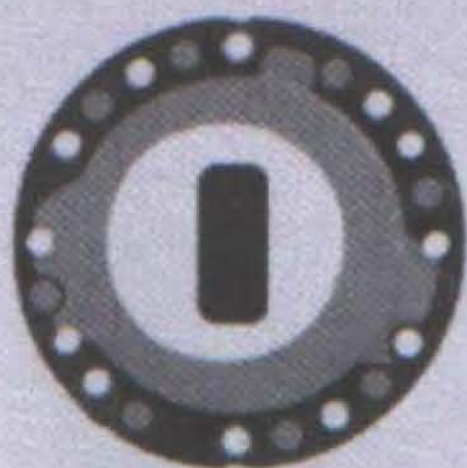
- Threading out the cable from adaptor, press in the adaptor to the lamp housing (may be on the lamp reflector or somewhere on the lamp housing), twist in the heatsink (sometime need the exten then pole), make sure the heatsink and LED bulb get enough touch and the heatsink is tightly installed.



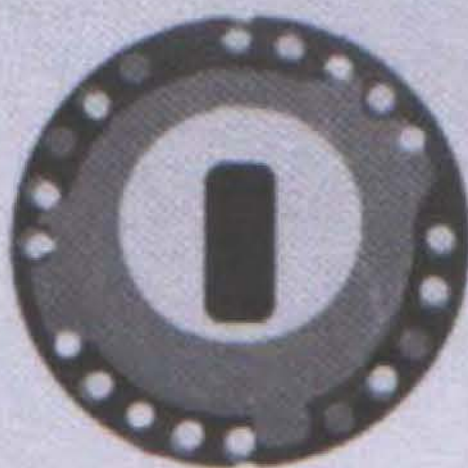
INSTALLATION INSTRUCTIONS

9005/9006/9012/H11/H15

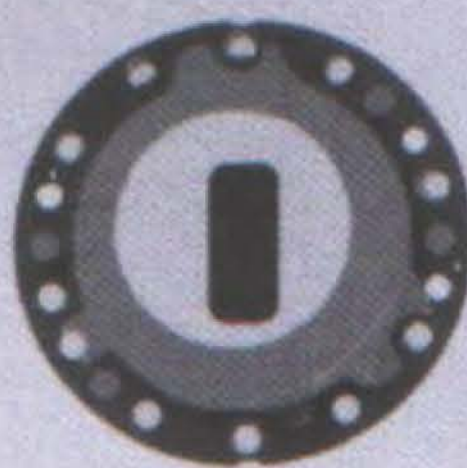
- The angle of adaptors can be adjusted at different cars. If the beam line is not perfect after you installtion this kit, please change the positon of the adaptors as the picture showed to get the best result.



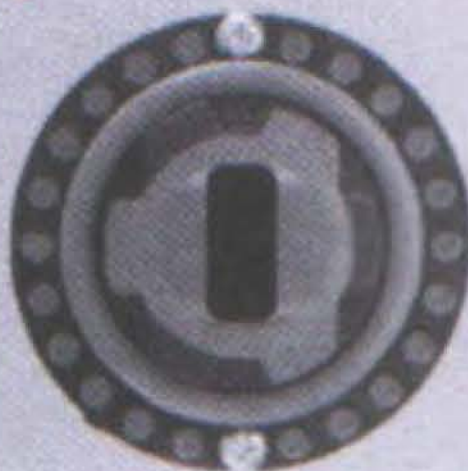
9012



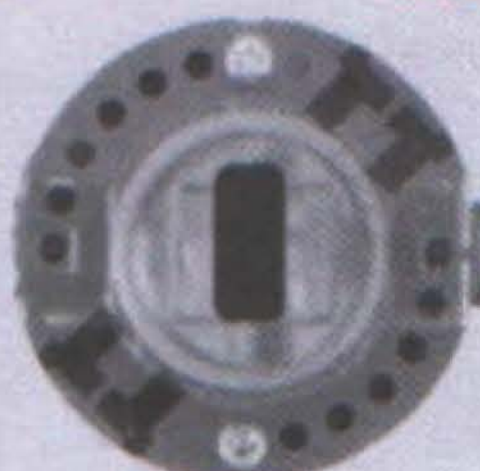
H10



9005/9006



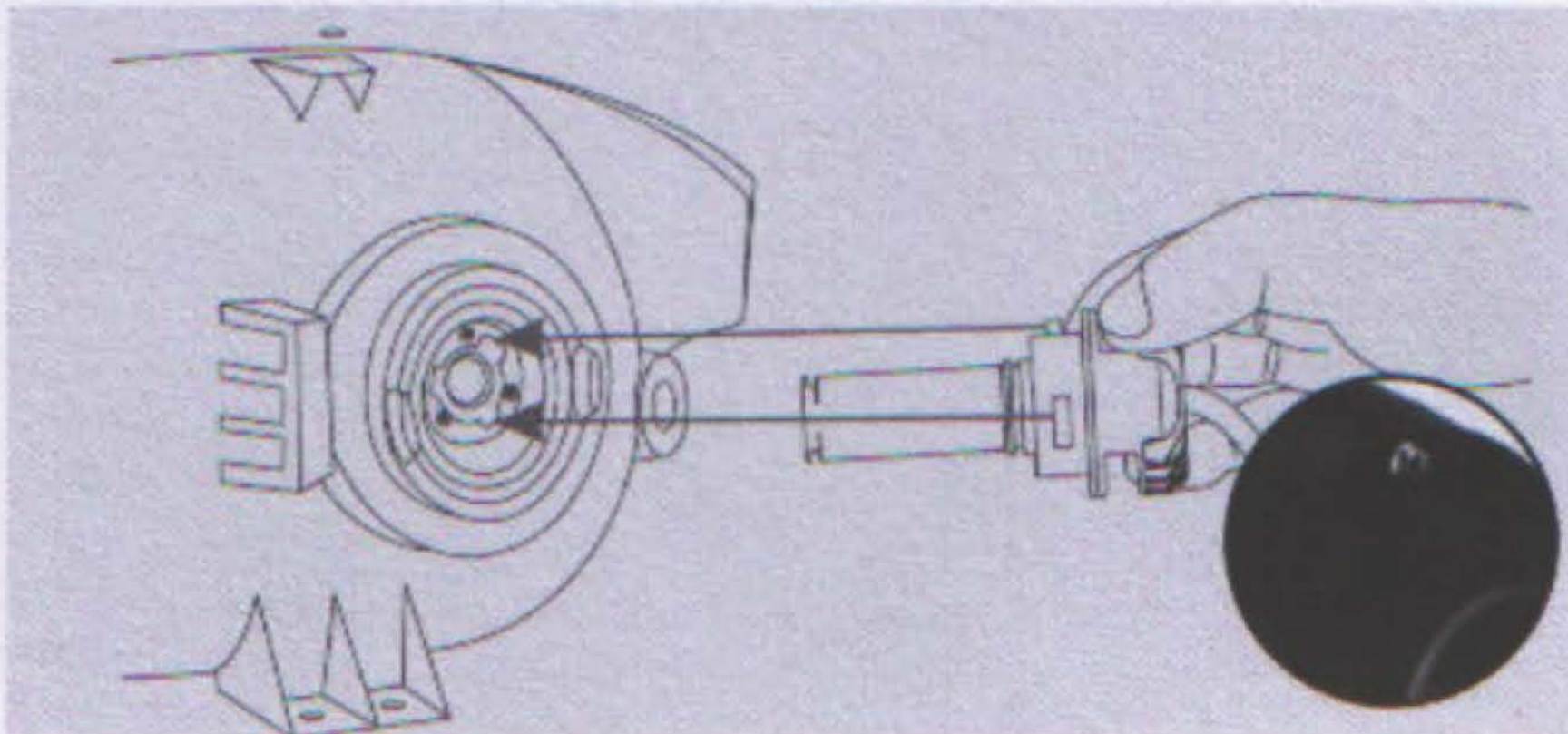
H11



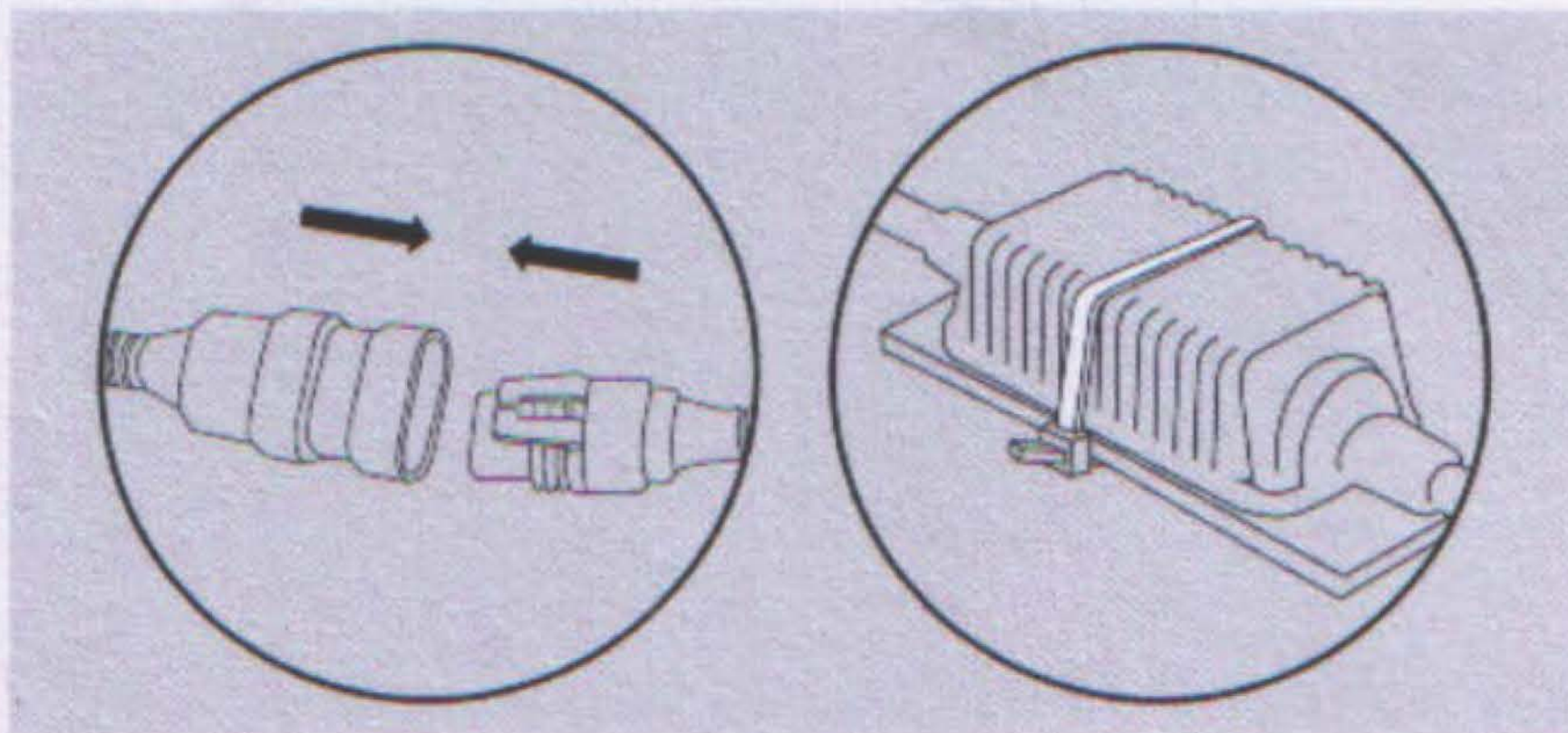
5202

1 HEAT SINK OUTSIDE OF HOUSING INSTALLATION

- Take out the original light bulb, and replace the led light bulb

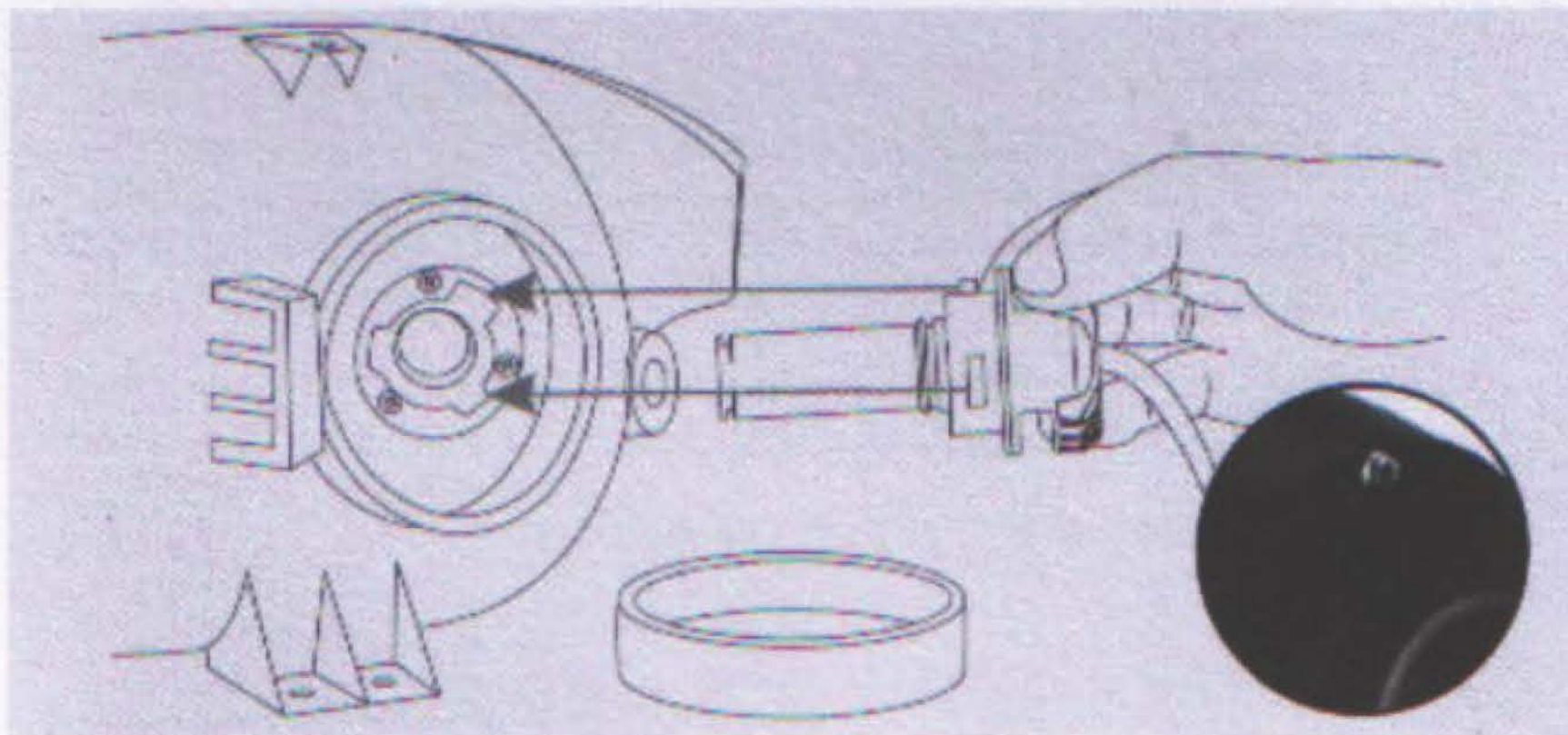


- Please connect to the original plug, and set the driver by zip tie and adhesive.

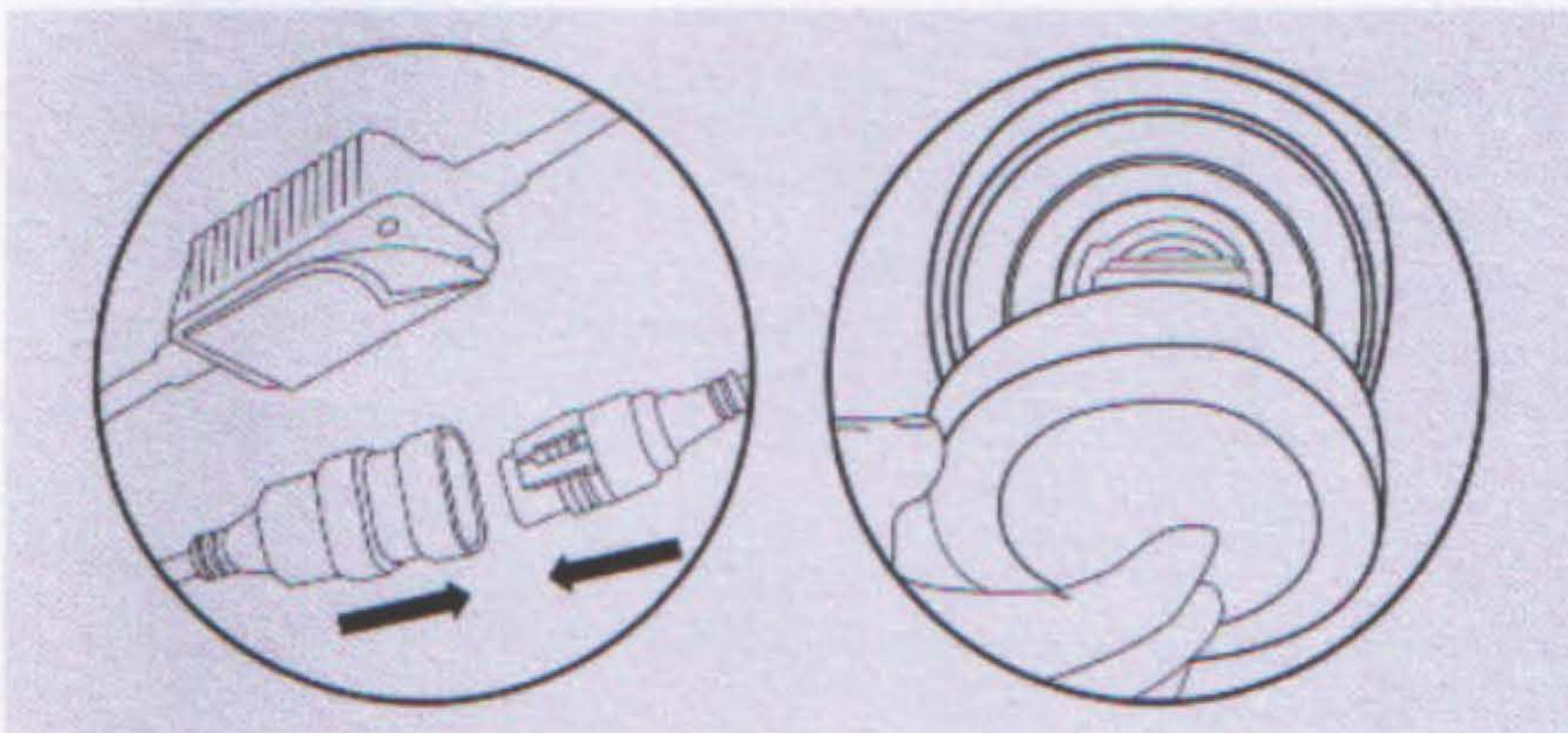


2 HEAT SINK INSIDE OF HOUSING INSTALLATION

- Open the headlight cover and take out the original light bulb, replace with the led bulb.



- Connect to the original plug, use the double side adhesive to set the driver, and put the dust cover back.



TOUBLE SHOOTING

Please flowing the steps to check if the LED bulb can not work in right way.

- Check if the plugs are connected in right way.
- Make sure you turn on the button
- Make sure the battery is not at capacity loss.

RECOVERY



This LED light use recycleable materials, the Marks on the package means this product can meet the Europe requirements of 2002/96/EC.



Please donot dispatch this product with other wastes, apply the garbage classification law in your country.

ABOUT GUARANTEE

The quality Guarantee period is 3 years. Manufacturer will not offer replacement or repair under these situations:

- * Man-made damage
- * Misuse under overvoltage.
- * Make customized modify on the product.

If the product is defective in 3 years under normal using, please fill the blanks of this page and return it to the vendor, we will replace for you timely.

Please fill this table honestly

Your Name: _____ Address: _____

Vendor Name: _____

Post Code: _____

Product series Number(its on the stick of the cable):

_____ This is very important.

